

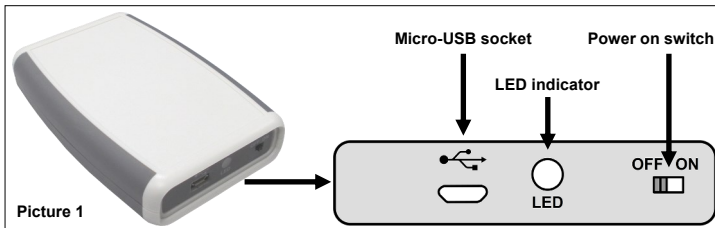
GENERAL DESCRIPTION

The **TAU-DD-01** is an interface device that can be used to connect a personal computer or a tablet, running the appropriate software application, to a wireless system based on the Taurus protocol.

USAGE

The **TAU-DD-01** links to **TAU-TRM-01** or **TAU-CEM-01** central nodes for system management and diagnostic purposes; this usage can be used instead of the hard wired connection.

It is possible to link the **TAU-DD-01** to **TAU-EXM-01** expander nodes, but functionality is limited to diagnostic purposes.



PC - MICRO USB CABLE - TAU-DD-01 SETUP

Connection through micro-USB cable is possible only with PCs.

- 1) Insert the USB A-type connector into a free USB port of the PC.
- 2) Power on the **TAU-DD-01** if not already done.
- 3) Insert the micro-USB B-type connector into the **TAU-DD-01**'s micro-USB socket.

Taurus management / monitoring software application can now interface the Taurus system through the **TAU-DD-01**.

CONNECTING TO THE TAURUS SYSTEM

- 1) Run the Taurus management / monitoring application on the PC or the tablet.
- 2) Select from the application the **TAU-DD-01** you want to use; more than one **TAU-DD-01** can be connected.
- 3) Select the Taurus network device (**TAU-TRM-01**, **TAU-CEM-01** or **TAU-EXM-01**) through which you want to access the Taurus system. Keep in mind that more than one network device can be in the **TAU-DD-01**'s scope.

TECHNICAL SPECIFICATIONS *

RF SPECIFICATIONS	
TAU-DD-01 to TAU-TRM-01 / TAU-CEM-01 / TAU-EXM-01 communication range	200 m in open space
Operating RF ranges and correspondent number of channels	868.000 - 868.600 MHz (24 channels) 868.700 - 869.200 MHz (20 channels) 869.400 - 869.650 MHz (10 channels) 869.700 - 870.000 MHz (12 channels)
Total RF channels	66
Radiated power	14 dBm (25 mW)

BLUETOOTH SPECIFICATIONS	
TAU-DD-01 to Android device (when used with Survey APP)	50 m in open space
Operating frequency range	2.402 - 2.481 GHz
Radiated power	Up to 5 dBm (3.16 mW)
Maximum data range	1 Mbps
Application throughput	Up to 305 kbps
Standards	IEEE 802.15.1 Bluetooth low energy (BLE) 4.2 specification compliant

POWER SUPPLY SPECIFICATIONS	
Batteries type, number and voltage	2 x AA (1.5 V)
Maximum load	65 mA (peak impulsive)

ENVIRONMENTAL SPECIFICATIONS	
Allowed temperature range	-10 to +55 °C
Maximum allowed humidity	95 % RH (non condensing)
IP rating	21

Mechanical specifications	
Dimensions	79 x117 x 24 mm
Weight	100 g (without batteries)

* Check the latest version of document TDS-TWDDX for further data, obtainable from your supplier.

WARNINGS AND LIMITATIONS

Our devices use high quality electronic components and plastic materials that are highly resistant to environmental deterioration. However, after 10 years of continuous operation, it is advisable to replace the devices in order to minimize the risk of reduced performance caused by external factors. Ensure that this device is only used with compatible control panels. Detection systems must be checked, serviced and maintained on a regular basis to confirm correct operation. Smoke detectors may respond differently to various kinds of smoke particles, thus application advice should be sought for special risks. Detectors cannot respond correctly if barriers exist between them and the fire location and may be affected by special environmental conditions. Refer to and follow national codes of practice and other internationally recognized fire engineering standards. Appropriate risk assessment should be carried out initially to determine correct design criteria and updated periodically.

Use only in Taurus fire detection and alarm systems.

WARRANTY

All devices are supplied with the benefit of a limited 5 years warranty relating to faulty materials or manufacturing defects, effective from the production date indicated on each product. This warranty is invalidated by mechanical or electrical damage caused in the field by incorrect handling or usage. Product must be returned via your authorized supplier for repair or replacement together with full information on any problem identified. Full details on our warranty and product's returns policy can be obtained upon request.

The warranty does not cover the provided batteries.



Hyfire Wireless Fire Solutions
Limited - Unit B12a, Holly Farm
Business Park, Honiley,
Warwickshire, CV8 1NP - United
Kingdom

21

TAU-DD-01